



# TAURULIFT T 307 H



[www.ausa.com](http://www.ausa.com)

**AUSA Center, S.L.** ● Ctra. de Vic, Km 2.8 - P.O.B. 194. 08243 Manresa - BARCELONA (ESPAÑA) Tel.: +34 93 874 73 11 - E-mail: [ausa@ausa.com](mailto:ausa@ausa.com)



(Sede central AUSA-Manresa)

- AUSA Madrid** ● Pol. Ind. Coslada - C. Marconi 15-17. 28823 Coslada - MADRID (ESPAÑA) Tel.: +34 91 669 00 06 - E-mail: [ausa.madrid@ausa.com](mailto:ausa.madrid@ausa.com)
- AUSA France** ● Z. I. Saint Charles - Rue de Zürich, 66000 PERPIGNAN (FRANCE) Tel.: +33 (0) 4 68 54 38 97 - E-mail: [ausa.france@ausa.com](mailto:ausa.france@ausa.com)
- AUSA Deutschland** ● Heinrich - Welken Str. 5. 59069 HAMM (GERMANY) Tel.: +49 (0) 2385-9359362 - E-mail: [ausa.deutschland@ausa.com](mailto:ausa.deutschland@ausa.com)
- BEIJING Rep. Office** ● Address Room 527. HengXiang Building, Tuanjieshu Nanli, Chaoyang District. - BEIJING 100026 (CHINA)  
Tel.: 86-10-8597 1983 - Fax: 86-10-8597 1993 - E-mail: [ausa.china@ausa.com](mailto:ausa.china@ausa.com)
- AUSA UK** ● Tel.: 07970639988 - E-mail: [ausa.uk@ausa.com](mailto:ausa.uk@ausa.com)
- AUSA Brasil** ● Tel.: +55 51 33622111 - E-mail: [ausa.brasil@ausa.com](mailto:ausa.brasil@ausa.com)
- AUSA México** ● Gustavo Baz, 47. 53489 Naucalpan de Juárez, Edo. de México (MÉXICO) Tel.: +55 2166-9066 - E-mail: [ausa.mexico@ausa.com](mailto:ausa.mexico@ausa.com)

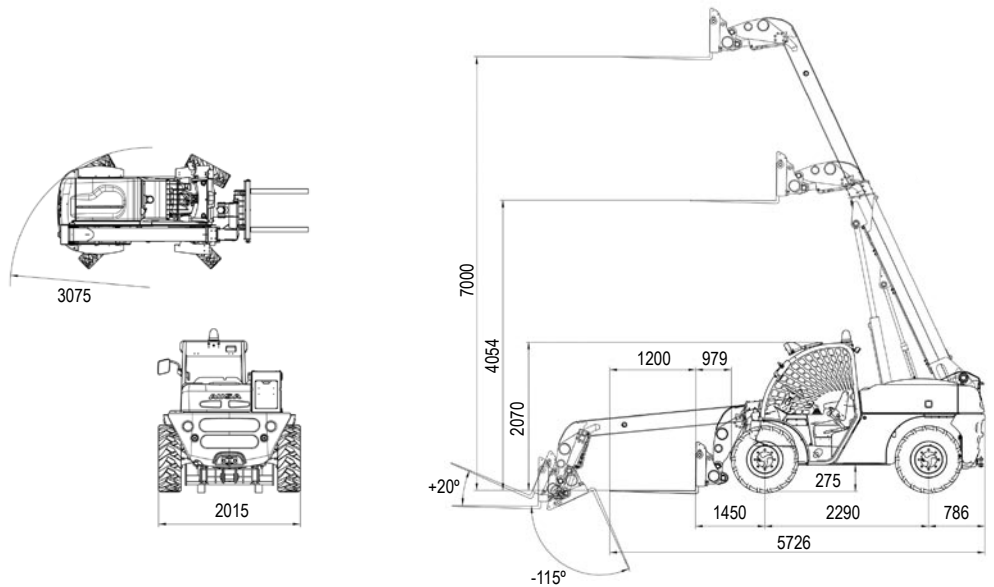


FEM-AEM



**T 307 H**

**AUSA**  
www.ausa.com



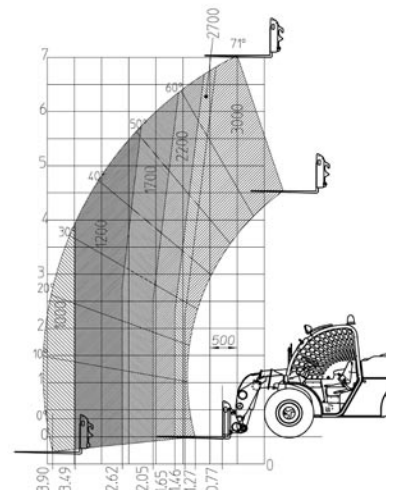
**TECHNICAL SPECIFICATIONS**

		<b>T 307 H</b>
Load capacity (Kg)	Max. load	3.000 @ 500 mm
	Load at max. height	3.000 @ 500 mm
Lifting height (mm)	Maximum lifting height	7.000 @ 500 mm
	Lifting height at max. load	7.000 @ 500 mm
Reach	Max reach	3.980 mm
	Capacity at max reach	1.000 Kg
Unload weight		5.500 Kg
Engine	Turbo-diesel	Kubota V-3600-T
	Power / SAE J1995	62,3 kW / 84,7 CV
	Torque	270 Nm
	N° of cylinders	4
	Cooling system	Water
Traction		4x4 permanent
Steering		Hydraulic
		Front wheel steer / All wheel steer / Crab steer
Transmission		Hidrostatic 2 gear
Engine starting system		Electric
Speed		20 Km/h
Axles		Dana Spicer
Gradeability		39%
Hydraulic circuit	Working pressure	260 bar
	Hydraulic pump	36 cc
	Flow circuit	73,4 l/min
Tyres	Front	14 - 17,5
	Rear	14 - 17,5
External turning radius (mm)		3.075 mm
Tank capacity	Fuel	110 l
	Hydraulic fluid	70 l
Service brake		Disc brake
Parking brake		Mecanically actuated disk-brake

**STANDARD EQUIPMENT**

- Homologated FOPS/ROPS tilting cabin for easy service
- Joystick with integrated functions. "total control of movements"
- Adjustable ergonomic seat with safety belt
- Rear view mirror
- Audible reverse warning
- Rotating beacon
- Antivandalic system
- Limited slip differential on front axle
- 4th auxiliary hydraulic service with quick coupling
- Road Traffic Selector: Lock joystick and 2 front wheels steering
- Active safety system with boom locking by instability/ Engine start lock with hand brake activated / Control arm lock without driver
- Semi-closed cabin
- Closed soundproof cabin with heater
- Air conditioning integrated under the cabin
- Radiostereo CD
- Adjustable steering column
- Front protective grille
- Load backrest
- Electronic anti theft protection system
- Homologated lighting equipment
- Working light
- 5th auxiliary hydraulic service with quick coupling
- Hydraulic quick coupling system (Universal SLL type or Euro)
- 4th auxiliary hydraulic service with continuous flow
- Other tyres pattern available
- FEM III forks carriage with or without integrated side-sift (TDL)
- Bucket 4 in 1
- Bucket 600 lt / Bucket 700 lt / Bucket 1.000 lt
- Multiple attachments available proven and tested from factory

**OPTIONAL EQUIPMENT**



AUSA reserves the right to make any changes in the specifications without prior notice.