



A Series High Range Stand-on Pallet Stacker With Initial Lift

with capacities of 1,200 to 1,600kg

The World of Hangcha


HANGCHA

A Series High Range Stand-on Pallet Stacker With Initial Lift

The A Series Pallet Stacker Truck is a new product developed for warehouse and logistics applications. With the latest AC control technology, it features excellent performance, easy operation, safety and reliability, and low maintenance cost, and is an ideal vehicle for loading, unloading, and handling palletized goods in warehouse, supermarket, and workshop. The A series pallet stacker with initial lift offers better reachability with its lifting arms.

Easy/ Efficiency/ Economy

Appearance

- / The A series pallet stacker with initial lift is completed with specialized industrial design of appearance. The entire truck features smooth lines and affluent sense of movement, with full consideration being given to ergonomics, in accord with the latest appearance design trend.
- / It is manufactured with steel plate stamping and injection molding technologies, solid and durable, in compliance with environmental requirements.



High Performance

- / Center stand-on driving mode and ESP(Electric Steering Power)system offer easier and more flexible operation.
- / The arm initial lifting function offers better reachability. The upper and lower double pallet handling design not only can meet requirements of stacking operation, but also brings higher material handling efficiency.
- / Lifting and lowering stepless speed regulation of the fork is a standard configuration.
- / The high efficiency traction motor realizes high driving speed and strong climbing performance.
- / The AC driving motor features excellent acceleration performance, outstanding climbing ability, low heat emission, and maintenance-free.
- / The latest ZAPI AC control system realizes accurate and stable control, and higher efficiency.
- / The CANBUS structure makes communication of the entire machine faster and more reliable.
- / Regenerative brake of the truck prevents it from sliding on a slope.
- / Hydraulic power unit, switches, plug connectors, battery condition meter, timer and other important parts are all of renowned domestic and abroad brands.

Comfort

- / The lower vibrational pedal offers much higher driving comfort, and reduces fatigue of long-duration operation.
- / The REMA tiller made in Germany is simple but beautiful, and all operations can be done easily with one hand.
- / The tortoise speed switch with light allows the truck to move at slow speed more conveniently, and can stack goods even in confined space.
- / The optimized truck structure guarantees excellent visibility, and easy access and exit of pallet.
- / The design of narrow body with large round corners makes the truck more suitable for operation in concentrated goods shelves, and the wedge-shaped design of truck base offers much higher passing ability.
- / Different distance between fork-arms and fork length are optional, being suitable for handling of various pallets.
- / Side roll out battery can realize easy and fast replacement (optional).

Reliability

- / Four-pivots and low-gravity-center design and the high-strength steel plate framed structure feature large residual load capacity, and long service life.
- / All plug connectors are imported and waterproof, and all cables have reliable protection, which increases reliability of electrical system significantly.
- / Non-contact proximity switch features long service life and reliable operation.
- / Electronic lifting limitation eliminates overflow of the hydraulic power unit, which is more energy efficient, and can protect the motor of power unit.
- / The hydraulic power unit features low noise, small vibration, and stable and reliable lifting and lowering.
- / Stamping molded fork has higher strength and impact resistance.
- / Power plug is fastened to truck body, which can avoid damage of plug when battery is replaced.
- / The battery is fixed securely, and battery cover is supported with flexible material, which reduces vibration and noise during operation.

Safety

- / Traveling speed will be automatically reduced after fork lifting 500mm.
- / Turning speed is automatically reduced when steering.
- / Release braking, reverse braking, and three types of emergency braking can ensure safety of traveling.
- / Anti-sliding function on slope can ensure safety of operation.
- / The belly button on top of operating handle can avoid the driver from injury effectively in case of emergency during backward driving of the pallet truck.
- / The soft landing system reduces declining speed automatically when height from ground to fork is less than 100mm, which provides effective protection for goods.

Maintenance

- / The brushless, maintenance-free AC driving motor reduces operation cost significantly.
- / The brushless, maintenance-free AC steering motor reduces operation cost significantly (optional).
- / The meter integrating battery indicator, timer, and fault self-diagnosis is convenient for maintenance.
- / All rotating shafts are equipped with lubricating sleeve and oil cup, which is convenient for maintenance and has a long service life.

Standard specification

- / AC driving motor
- / ZAPI AC controller
- / REMA tiller
- / Imported hydraulic power unit
- / Pedal
- / Emergency power off switch
- / Multi-function battery condition meter
- / Tandem load wheel
- / Initial lift 125mm
- / Fork length 1150mm
- / Outer distance between fork-arms 570mm
- / Electronic lifting limitation
- / Soft landing system
- / Multi-function handle of CAN bus
- / Horn
- / Battery
- / EPS system

Options

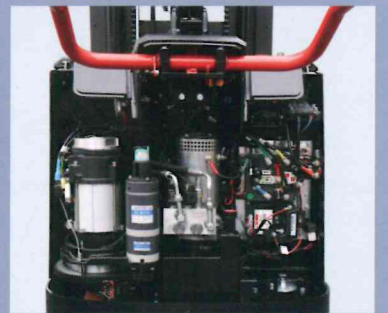
- / Various imported and home-made batteries
- / AC steering motor
- / Different mast height (see parameter list for details)
- / Fork length 1220/1600
- / Outer distance of forks 600/680mm
- / Side roll out battery
- / Automatic battery charger
- / Load backrest
- / Mast shield
- / Lithium battery



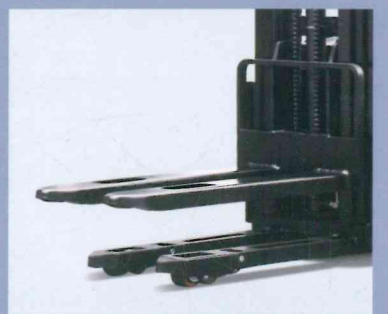
Rema tiller



The integrated stamping molded guardrail offers better protection for the operator



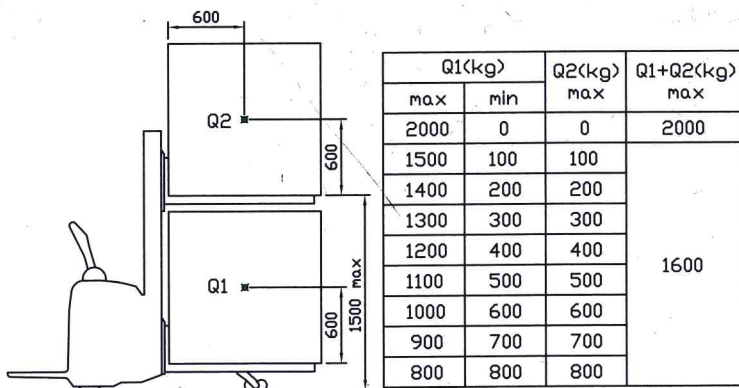
Back cover can be opened fully, and all components and parts are clear at a glance, which is very convenient for maintenance of the entire machine



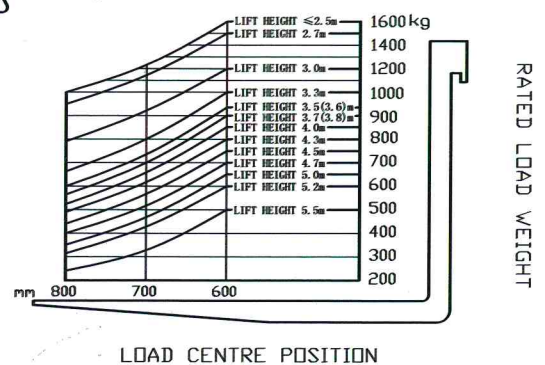
Tandem load wheel

A Series High Range Stand-on Pallet Stacker With Initial Lift

Characteristics	1.1	Manufacturer	HANGCHA GROUP CO.,LTD.			
		1.2	Manufacturer's type designation	CDD12-AZ3S-L	CDD14-AZ3S-L	CDD16-AZ3S-L
	1.3	Drive (Drive: electric (battery or mains), diesel, petrol, fuel gas)	electric	electric	electric	
	1.4	Operator type (hand, pedestrian, standing, seated, order-picker)	pedestrian	pedestrian	pedestrian	
	1.5	Load capacity	Q (kg)	1200	1400	1600
	1.6	Load centre distance	C(mm)	600	600	600
	1.8	Load distance, centre of drive axle to fork	x(mm)	748	748	748
	1.9	Wheelbase	y(mm)	1507	1507	1507
Weights	2.1	Service weight	kg	1295	1300	1350
Wheels&Tyres	3.1	Tyres: solid rubber, superelastic, pneumatic, polyurethane		polyurethane	polyurethane	polyurethane
	3.2	Tyre size, front		Φ230×75	Φ230×75	Φ230×75
	3.3	Tyre size, rear		Φ85×70	Φ85×70	Φ85×70
	3.4	Additional wheels (dimensions)		Φ140×55	Φ140×55	Φ140×55
	3.5	Wheels, number front rear (x = driven wheels)		1x+1/4	1x+1/4	1x+1/4
	3.6	Tread, front	b ₁₀ (mm)	520	520	520
	3.7	Tread, rear	b ₁₁ (mm)	385	385	385
Dimensions	4.2	Height, mast lowered	h ₁ (mm)	1932	1932	1932
	4.3	Free lift	h ₂ (mm)	90	90	90
	4.4	Lift	h ₃ (mm)	2700	2700	2700
	4.6	Initial lift	h ₅ (mm)	125	125	125
	4.15	Height, lowered	h ₁₃ (mm)	90	90	90
	4.19	Overall length (pedal folded)	l ₁ (mm)	2135	2135	2135
	4.20	Length to face of forks	l ₂ (mm)	985	985	985
	4.21	Overall width	b ₁ (mm)	800	800	800
	4.22	Fork dimensions DIN ISO 2331/Fork dimensions	s/e/l(mm)	60/185/1150	60/185/1150	60/185/1150
	4.25	Distance between fork-arms		570	570	570
	4.32	Ground clearance, centre of wheelbase	m ₂ (mm)	25	25	25
4.33	Aisle width for pallets 1000 x 1200 crossways	Ast (mm)	2600	2600	2600	
4.34	Aisle width for pallets 800 x 1200 lengthways	Ast (mm)	2550	2550	2550	
4.35	Turning radius	Wa(mm)	1745	1745	1745	
Performance	5.1	Travel speed, unladen	km/h	7	7	7
	5.2	Lift speed, laden/unladen	m/s	0.135/0.210	0.165/0.325	0.135/0.250
	5.3	Lowering speed, lade/unladen	m/s	0.260/0.165	0.260/0.165	0.260/0.165
	5.7	Gradeability, laden/unladen	%	10/16	10/16	8/16
	5.10	Service brake		electric	electric	electric
Electric-engine	6.1	Drive motor rating S2 60 min	kw	2.2	2.2	2.2
	6.2	Lift motor rating at S3 15 %	kw	2.2	3.2	3.2
	6.3	Battery according to DIN 43531/35/36 A, B, C, no		4DB280	4DB280	4DB340
	6.4	Battery voltage/nominal capacity K5		24/280	24/280	24/340
Other	8.1	Type of drive unit		AC Control	AC Control	AC Control



SUBTRACT 700kg WITH SIDESHIFTER



1.2t/1.4t/1.6t Mast specification

Type	Fork lift height h ₃	Max.fork height (h ₃ +h ₁₃)	Mast lowered h ₁	Mast extended h ₄	Free lift height	Load capacity at 600mm		
						1.2t	1.4t	1.6t
	mm	mm	mm	mm	mm	kg	kg	kg
Wide view duplex mast	2000	2090	1582	2582	90	1200	1400	1600
	2500	2590	1832	3082	90	1200	1400	1600
	2700	2790	1932	3282	90	1200	1300	1500
	3000	3090	2082	3582	90	1130	1130	1200
	3300	3390	2232	3882	90	950	950	1000
	3500	3590	2332	4082	90	900	900	940
	3600	3690	2382	4182	90	890	890	930
	3700	3790	2432	4282	90	850	850	900
	3800	3890	2482	4382	90	840	840	890
	4000	4090	2682	4682	90	800	800	850
	4300	4390	2832	4982	90	750	750	800
4500	4590	2932	5182	90	700	700	750	
Full free duplex mast	2000	2090	1635	2635	1090	1200	1400	1600
	2500	2590	1885	3135	1340	1200	1400	1600
	2700	2790	1985	3335	1440	1200	1300	1500
	3000	3090	2135	3635	1590	1130	1130	1200
	3300	3390	2285	3935	1740	950	950	1000
	3500	3590	2385	4135	1840	900	900	940
Full free triplex mast	3600	3690	2435	4235	1890	890	890	930
	3500	3590	1884	4254	1220	890	890	930
	3700	3790	1949	4449	1290	850	850	900
	4000	4090	2049	4749	1390	800	800	850
	4300	4390	2149	5049	1490	750	750	800
	4500	4590	2199	5199	1590	700	700	750
	4700	4790	2299	5499	1590	650	650	700
	5000	5090	2394	5784	1700	600	600	650
	5200	5290	2449	5949	1790	550	550	600
5500	5590	2549	6249	1890	450	450	500	



ZHEJIANG HANGCHA IMP. & EXP. CO., LTD.

Factory site: No. 88, Donghuan Rd., Lin'an
Economic Development Zone, Zhejiang,
China (311305)

Tel: +86-571-88926735 88926755
Fax: +86-571-88132890 88926789

sales@hcforklift.com
www.hcforklift.com



HANGCHA trucks conform
to the European Safety
Requirements.

HANGCHA GROUP CO., LTD. reserves the right to make any changes without notice concerning colors, equipment, or specifications detailed in this brochure, or to discontinue individual models. The colors of trucks, delivered may differ slightly from those in brochures.