

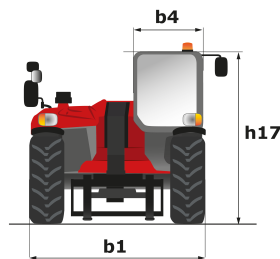
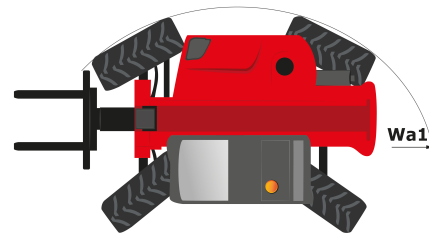
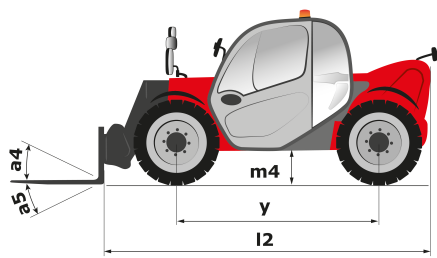
Technical sheet

MT 625 H

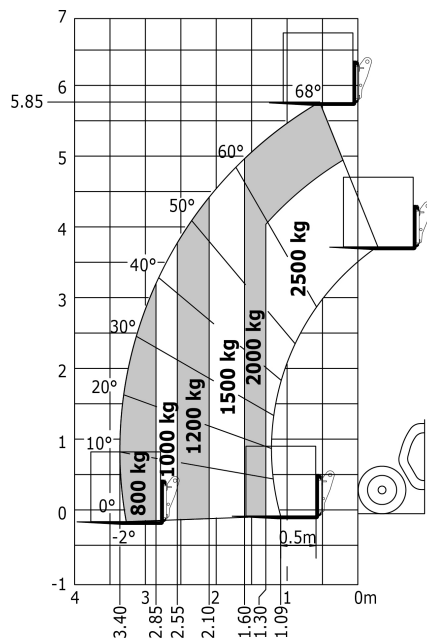
Telehandlers

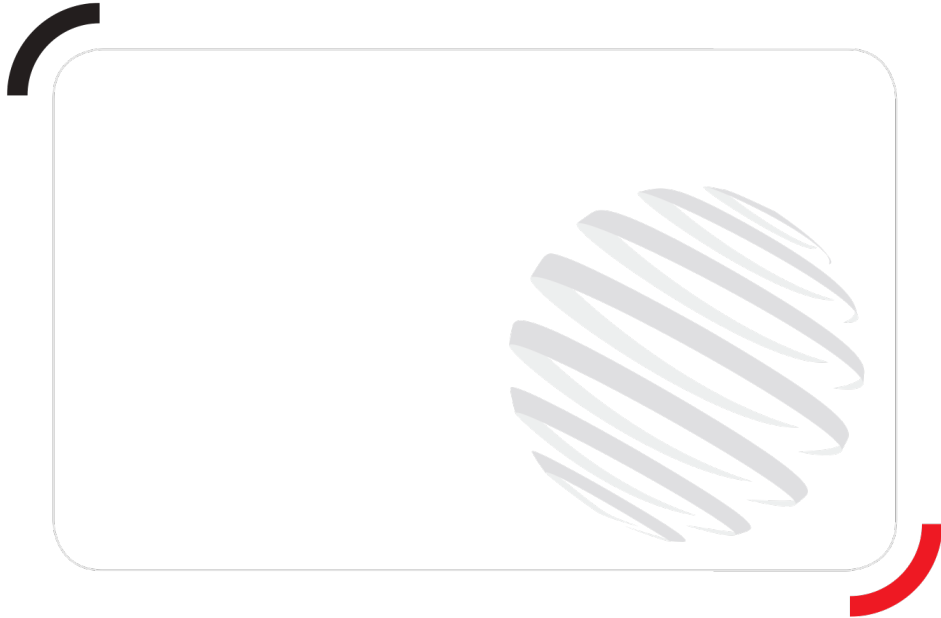


Capacities	Metric	Imperial
Max. capacity	2500 kg	5500 lbs
Max. lift height	5.85 m	19 ft 2 in
Bucket breakout force	3427 daN	7704 lbf
Weight and dimensions		
l2 - Overall length of fork carriage	3.90 m	12 ft 9 in
b1 - Overall width	1.81 m	5 ft 12 in
h17 - Overall height	1.92 m	6 ft 4 in
y - Wheelbase	2.30 m	7 ft 8 in
m4 - Ground clearance	0.33 m	1 ft 1 in
b4 - Overall cab width	0.79 m	2 ft 8 in
Wa1 - Frame outer turning radius	3.31 m	10 ft 10 in
Unladen weight (with forks)	4800 kg	10362 lbs
Standard tyres	Pneumatic	Pneumatic
Standard forks	1200x125x45	3.11x0.5x0.2
Performances		
Lifting	8 s	8 s
Lowering	5.40 s	5.40 s
Telescope extension	5.60 s	5.60 s
Retracting the telescope	4.30 s	4.30 s
Scoop	3.50 s	3.50 s
Dump	3.60 s	3.60 s
Engine		
Brand	Kubota	Kubota
Environmental standards	Stage 5	Stage 5
Power	75 hp / 55.40 kW	75 hp / 55.40 kW
Max. torque	265 Nm at -	- at -
Laden drawbar pull	3550 daN	7980 lbf
Transmission		
Type	Hydrostatic	Hydrostatic
Number of gears (forward/reverse)	2/2	2/2
Parking brake	Automatic negative parking brake	Automatic negative parking brake
Service brake	Hydraulic	Hydraulic
Hydraulics		
Type of pump	Gear pump	Gear pump
Hydraulic flow rate - Pressure	90 l/min - 235 bar	23.70 gpm - 3408 psi
Tank capacities		
Hydraulic oil	115 l	30.37 US gal.
Fuel	63 l	16.64 US gal.
Cooling liquid	12 l	3.17 US gal.
Noise & vibration		
Noise at driving position (LpA)	76 dB(A)	76 dB(A)
Noise to environment (LwA)	104 dB(A)	104 dB(A)
Vibration on hands/arms	<2.5 m/s ²	<8.2 ft/s ²
Miscellaneous		
Steering wheels / Driving wheels	4 / 4	4 / 4
Safety	Cab ROPS - FOPS Level 2	Cab ROPS - FOPS Level 2
Controls	JSM	JSM



Load chart





Siège Social
430 rue de l'Aubinière - 44150 Ancenis Cedex - France
Tel: +33(0)2 40 09 10 11 - Fax: +33 (0)2 40 09 10 97
www.manitou.com



This brochure describes versions and configuration options for Manitou products which may be fitted with different equipment. The equipment described in this brochure may be standard, optional or not available depending on version. Manitou reserves the right to change the specifications shown and described at any time and without prior warning. The manufacturer is not liable for the specifications given. For more information, contact your Manitou dealer. Non-contractual document. Product descriptions may differ from actual products. List of specifications is not comprehensive. The logos and visual identity of the company are the property of Manitou and may not be used without authorisation. All rights reserved. The photos and diagrams contained in this brochure are provided for information only.

MANITOU BF SA - Limited company with board of directors - Share capital: 39,547,824 euros - 857 802 508 RCS Nantes