

LIFTING MAST HEIGHT

Free visibility design

SMV 10-600 B – 13.6-600 B			SMV 10-1200 B – 18-900 B			SMV 18-1200 B – 25-1200 B			SMV 28-1200 B – 33-1200 B		
Duplex no freelif (2-stage)											
Lift (mm)	Mast height min-max (mm)	Freelift (mm)	Lift (mm)	Mast height min-max (mm)	Freelift (mm)	Lift (mm)	Mast height min-max (mm)	Freelift (mm)	Lift (mm)	Mast height min-max (mm)	Freelift (mm)
3000	2945 / 4415	-	3000	3145 / 4600	-	3000	3310 / 4755	-	-	-	-
3500	3195 / 4915	-	3500	3395 / 5100	-	3500	3560 / 5255	-	-	-	-
4000	3445 / 5415	-	4000	3645 / 5600	-	4000	3810 / 5755	-	4000	4010 / 5955	-
4500	3695 / 5915	-	4500	3895 / 6100	-	4500	4060 / 6255	-	4500	4260 / 6455	-
5000	3945 / 6415	-	5000	4145 / 6600	-	5000	4310 / 6755	-	5000	4510 / 6955	-
5500	4195 / 6915	-	5500	4395 / 7100	-	5500	4560 / 7255	-	5500	4760 / 7455	-
6000	4445 / 7415	-	6000	4645 / 7600	-	6000	4810 / 7755	-	6000	5010 / 7955	-
6500	4695 / 7915	-	6500	4895 / 8100	-	6500	5060 / 8255	-	6500	5260 / 8455	-
-	-	-	7000	5145 / 8600	-	7000	5310 / 8755	-	7000	5510 / 8955	-
-	-	-	8000	5645 / 9600	-	8000	5810 / 9755	-	8000	6010 / 9955	-
-	-	-	-	-	-	9000	6310 / 10755	-	9000	6510 / 10955	-
-	-	-	-	-	-	10000	6810 / 11755	-	10000	7010 / 11955	-
Duplex freelif (2-stage)											
Lift (mm)	Mast height min-max (mm)	Freelift (mm)	Lift (mm)	Mast height min-max (mm)	Freelift (mm)	Lift (mm)	Mast height min-max (mm)	Freelift (mm)	Lift (mm)	Mast height min-max (mm)	Freelift (mm)
3000	2945 / 4415	1500	3000	3145 / 4600	1500	3000	3310 / 4755	1500	-	-	-
3500	3195 / 4915	1750	3500	3395 / 5100	1750	3500	3560 / 5255	1750	-	-	-
4000	3445 / 5415	2000	4000	3645 / 5600	2000	4000	3810 / 5755	2000	4000	4010 / 5955	2000
4500	3695 / 5915	2250	4500	3895 / 6100	2250	4500	4060 / 6255	2250	4500	4260 / 6455	2250
5000	3945 / 6415	2500	5000	4145 / 6600	2500	5000	4310 / 6755	2500	5000	4510 / 6955	2500
5500	4195 / 6915	2750	5500	4395 / 7100	2750	5500	4560 / 7255	2750	5500	4760 / 7455	2750
6000	4445 / 7415	3000	6000	4645 / 7600	3000	6000	4810 / 7755	3000	6000	5010 / 7955	3000
6500	4695 / 7915	3250	6500	4895 / 8100	3250	6500	5060 / 8255	3250	6500	5260 / 8455	3250
-	-	-	7000	5145 / 8600	3500	7000	5310 / 8755	3500	7000	5510 / 8955	3500
Triplex freelif (3-stage)											
Lift (mm)	Mast height min-max (mm)	Freelift (mm)	Lift (mm)	Mast height min-max (mm)	Freelift (mm)	Lift (mm)	Mast height min-max (mm)	Freelift (mm)	Lift (mm)	Mast height min-max (mm)	Freelift (mm)
4500	2945 / 5945	1500	4500	3150 / 6100	1500	4500	3310 / 6310	1500	4500	3510 / 6510	1500
5250	3195 / 6695	1750	5250	3400 / 6850	1750	5250	3560 / 7060	1750	5250	3760 / 7260	1750
6000	3445 / 7445	2000	6000	3650 / 7600	2000	6000	3810 / 7810	2000	6000	4010 / 8010	2000
6750	3695 / 8195	2250	6750	3900 / 8350	2250	6750	4060 / 8560	2250	6750	4260 / 8760	2250
-	-	-	7500	4150 / 9100	2500	7500	4310 / 9310	2500	-	-	-
SMV 37-1200 B – 45-1200 B											
Duplex no freelif (2-stage)											
Lift (mm)	Mast height min-max (mm)	Freelift (mm)	Lift (mm)	Mast height min-max (mm)	Freelift (mm)	Lift (mm)	Mast height min-max (mm)	Freelift (mm)	Lift (mm)	Mast height min-max (mm)	Freelift (mm)
4000	4550 / 6485	-	4000	5050 / 6975	-	4000	5750 / 7700	-	-	-	-
4500	4800 / 6985	-	4500	5300 / 7475	-	-	-	-	-	-	-
5000	5050 / 7485	-	5000	5550 / 7975	-	5000	6250 / 8700	-	-	-	-
5500	5300 / 7985	-	5500	5800 / 8475	-	-	-	-	-	-	-
6000	5550 / 8485	-	6000	6050 / 8975	-	6000	6750 / 9700	-	-	-	-
6500	5800 / 8985	-	6500	6300 / 9475	-	-	-	-	-	-	-
7000	6050 / 9485	-	7000	6550 / 9975	-	7000	7250 / 10700	-	-	-	-
8000	6550 / 10485	-	8000	7050 / 10975	-	-	-	-	-	-	-
9000	7050 / 11485	-	9000	7550 / 11975	-	-	-	-	-	-	-
10000	7550 / 12485	-	10000	8050 / 12975	-	-	-	-	-	-	-
Duplex freelif (2-stage)											
Lift (mm)	Mast height min-max (mm)	Freelift (mm)	Lift (mm)	Mast height min-max (mm)	Freelift (mm)	Lift (mm)	Mast height min-max (mm)	Freelift (mm)	Lift (mm)	Mast height min-max (mm)	Freelift (mm)
4000	4400 / 6345	2000	4000	5050 / 7050	2000	-	-	-	-	-	-
4500	4650 / 6845	2250	4500	5300 / 7550	2250	-	-	-	-	-	-
5000	4900 / 7345	2500	5000	5550 / 8050	2500	-	-	-	-	-	-
5500	5150 / 7845	2750	5500	5800 / 8550	2750	-	-	-	-	-	-
6000	5400 / 8345	3000	6000	6050 / 9050	3000	-	-	-	-	-	-
6500	5650 / 8845	3250	6500	6300 / 9550	3250	-	-	-	-	-	-
7000	5900 / 9345	3500	7000	6550 / 10050	3500	-	-	-	-	-	-
8000	6400 / 10345	4000	8000	7050 / 11050	4000	-	-	-	-	-	-
Triplex freelif (3-stage)											
Lift (mm)	Mast height min-max (mm)	Freelift (mm)	Lift (mm)	Mast height min-max (mm)	Freelift (mm)	Lift (mm)	Mast height min-max (mm)	Freelift (mm)	Lift (mm)	Mast height min-max (mm)	Freelift (mm)
4500	3930 / 6930	1500	-	-	-	-	-	-	-	-	-
5250	4180 / 7680	1750	-	-	-	-	-	-	-	-	-
6000	4430 / 8430	2000	-	-	-	-	-	-	-	-	-
6750	4680 / 9180	2250	-	-	-	-	-	-	-	-	-
6750	4680 / 9180	2250	-	-	-	-	-	-	-	-	-

NOTE 1. For 3-high container handler, choose 7000 mm mast + 2230 mm for spreader = 9230 mm (3 x 9'6")

NOTE 2. For 4-high container handler, choose 10000 mm mast + 2230 mm for spreader = 12230 mm (4 x 9'6")

NOTE 3. Triplex 6000 = 3 x 8'6" with inverted forks (+2300 mm)

NOTE 4. Triplex 6750 = 3 x 9'6" with inverted forks (+2450 mm)

NOTE 5. For lifting heights starting at 7000 mm or higher the tilt angles are reduced to 4/2 deg from 10/5 deg

DRIVELINES

Fork lift trucks 10 – 33 tons

MODEL		SMV 10-600 B – 18-900 B			SMV 10-600 / 18-900 B & SMV 18-1200 B / 33-1200 B			
Engine	Units							
Make		Volvo	Volvo	Volvo	Volvo	Volvo	Cummins	Volvo
Model		TAD-620-VE	TAD-660-VE	TAD-561-VE	TAD-722-VE	TAD-760-VE	QSB-6, 7-C260	TAD-762-VE
Emission approval, EU / US		St 2 / Tier 2	St 3a / Tier 3	St 3b / Tier 4i	St 2 / Tier 2	St 3a / Tier 3	St 3a / Tier 3	St 3b / Tier 4i
Power / max speed (ISO 3046)	kW/rpm	147 / 2300	147 / 2300	155 / 2300	180 / 2300	184 / 2300	201 / 2300	185 / 2300
Torque @ speed (ISO 3046)	Nm/rpm	700 / 1500	800 / 1600	820 / 1200	1050 / 1400	1100 / 1500	990 / 1500	1180 / 1250
Displacement / cylinders	L/--	5.7 / 6-cyl	5.7 / 6-cyl	4.8 / 4-cyl	7.2 / 6-cyl	7.2 / 6-cyl	6.7 / 6-cyl	7.2 / 6-cyl
Alternator power / capacity	W/Amp	1540 / 55	2240 / 80	2800 / 100	1540 / 55	2240 / 80	1960 / 70	2800 / 100
Fuel consumption (normal)	L/hour	6-10	6-10	5-10	9-13	8-13	8-13	7-13
Transmission (make / model)		DANA TE-17	DANA TE-17	ZF 3WG-171	DANA TE-17	DANA TE-17	DANA TE-17	ZF 4WG-191

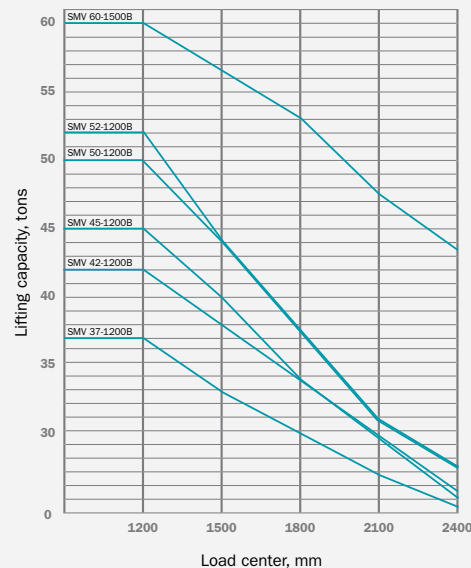
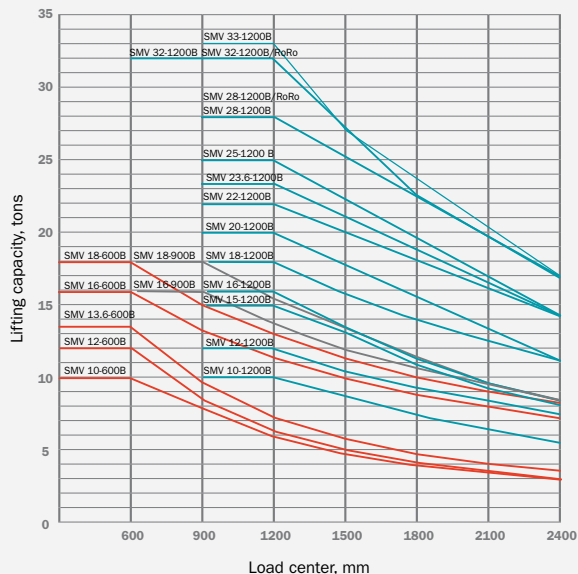
MODEL		SMV 10-600 B – 18-900 B			SMV 18-1200 B – 33-1200 B	
Transmission	Units					
Make		DANA	ZF	ZF	DANA	ZF
Model		TE-17300	3WG-171	4WG-191	TE-17300	4WG-191
Gear shift type		Automatic	Automatic	Automatic	Automatic	Automatic
No. of gears (fwd / rev)	No.	3 / 3	3 / 3	3 / 3	3 / 3	4 / 3
Power rating (max)	kW	200	180	200	200	200

Fork lift trucks 37 – 65 tons

MODEL		SMV 37-1200 B – 65-1200 B							
Engine	Units								
Make		Volvo	Scania	Scania	Cummins	Volvo	Scania	Volvo	Scania
Model		TAD-1340-VE	DC-13-074	DC-13-076	QSM-11-C335	TAD-1360-VE	DC-13-081	TAD-1361-VE	DC-13-077
Emission approval, EU / US		St 2 / Tier 2	St 2 / Tier 2	St 3a / Tier 3	St 3a / Tier 3	St 3b / Tier 4i	St 3b / Tier 4i	St 3b / Tier 4i	St 3b / Tier 4i
Power / max speed (ISO 3046)	kW/rpm	256 / 2100	257 / 2100	257 / 2100	272 / 2100	256 / 1900	257 / 2100	285 / 1900	294 / 2100
Torque @ speed (ISO 3046)	Nm/rpm	1770 / 1000	1950 / 1200	1640 / 1400	1674 / 1000	1740 / 1000	1950 / 1200	1940 / 1000	2172 / 1200
Displacement / cylinders	L/--	12.8 / 6-cyl	12.7 / 6-cyl	12.7 / 6-cyl	10.8 / 6-cyl	12.8 / 6-cyl	12.7 / 6-cyl	12.8 / 6-cyl	12.7 / 6-cyl
Alternator power / capacity	W/Amp	3080 / 110	2800 / 100	2800 / 100	1960 / 70	3080 / 110	2800 / 100	3080 / 110	2800 / 100
Fuel consumption (normal)	L/hour	12-18	12-18	12-18	12-18	12-18	12-18	14-20	14-20
Transmission (make / model)		DANA TE-27	DANA TE-27	DANA TE-27	DANA TE-27	DANA TE-27 (opt. ZF 4WG-261)	DANA TE-27 (opt. ZF 4WG-261)	DANA TE-32	DANA TE-32

MODEL		SMV 37-1200 B – 65-1200 B			
Transmission	Units				
Make		DANA	ZF	DANA	ZF
Model		TE-27400	4WG-261	TE-32400	4WG-311
Gear shift type		Automatic	Automatic	Automatic	Automatic
No. of gears (fwd / rev)	No.	4 / 4	4 / 3	4 / 4	4 / 3
Power rating (max)	kW	270	280	325	330

Lifting capacity vs. load center



TECHNICAL DATA

Fork lift trucks 10 – 18 tons

MODEL			SMV 10-600 B	SMV 12-600 B	SMV 13.6-600 B	SMV 10-1200 B	
LIFTING DATA	Dimensions	Identifier	Units				
	Lifting capacity		kg	10000	12000	13600	10000
	Load center	LC1	mm	600	600	600	1200
	Full lifting capacity up to lifting height		mm	7000	7000	7000	7000
	Lost load center	L4	mm	835	835	840	915
	Wheelbase	L3	mm	3000 (opt. 2800)	3000 (opt. 2800)	3250	3250
WEIGHT	Service weight		kg	14800	15200	16100	18900
	Axle pressure front, unloaded / at rated load		kg	7900 / 22600	7900 / 25600	8300 / 27900	10400 / 26900
	Axle pressure rear, unloaded / at rated load		kg	6900 / 2200	7300 / 1600	7800 / 1800	8500 / 2000
WHEELS	Tire type			Pneumatic	Pneumatic	Pneumatic	Pneumatic
	Tire dimension / ply rating, front & rear		Inch	11.00 x 20" / PR20	11.00 x 20" / PR20	12.00 x 20" / PR20	11.00 x 20" / PR20
	Rim dimensions, front & rear		Inch	8.00 x 20"	8.00 x 20"	8.00 x 20"	8.00 x 20"
	Tire pressure, front / rear		MPa	0.9 / 0.9	1.0 / 1.0	1.0 / 1.0	1.0 / 1.0
	Number of wheels, front / rear (X = driven)			4X / 2	4X / 2	4X / 2	4X / 2
	Track width, front / rear	T1 / T2	mm	1859 / 2036	1859 / 2036	1859 / 2036	1859 / 2036
DIMENSIONS	Mast tilt, backward / forward	β / α	deg	5 / 10	5 / 10	5 / 10	5 / 10
	Lifting height	H1	mm	4000	4000	4000	4000
	Mast height, retracted / extended	H3 - H4	mm	3445 / 5415	3445 / 5415	3445 / 5415	3645 / 5600
	Truck height over cabin / seat height	H5 - H6	mm	2890 / 1800	2890 / 1800	2890 / 1800	2905 / 1815
	Overall length (to back of fork)	L2	mm	4625	4625	4880	4955
	Drive axle width	W1	mm	2500	2500	2500	2550
	Fork dimensions (width x thickness x length)	W x T x L	mm	200 x 65 x 1500	200 x 65 x 1500	200 x 70 x 1500	200 x 90 x 2400
	Fork carriage type			Hydraulic-powered sideshift & fork positioner			
	Fork carriage width	W2	mm	2500	2500	2500	2550
	Fork positioning (min - max / outside)	FP	mm	570 / 2352	570 / 2352	570 / 2352	600 / 2344
	Fork sideshift (max / at fork position)	SS	mm	± 470 / 1215	± 470 / 1215	± 470 / 1215	± 470 / 1207
	Ground clearance (mast / middle / steer axle)	C1 / C2 / C3	mm	250 / 320 / 320	250 / 320 / 320	250 / 320 / 320	250 / 335 / 197
Aisle width	A1	mm	6735	6735	7015	7990	
	Turning radius (inner - outer)	R1 - R2	mm	< 250 - 4205	< 250 - 4205	< 250 - 4480	< 250 - 4480
PERFORMANCE	Drive speed forward, unloaded / at rated load		km/h	30 / 30	30 / 30	30 / 30	30 / 30
	Drive speed reverse, unloaded / at rated load		km/h	30 / 30	30 / 30	30 / 30	30 / 30
	Lifting speed, unloaded / at rated load		m/s	0.50 / 0.45	0.50 / 0.45	0.40 / 0.35	0.50 / 0.45
	Lowering speed, unloaded / at rated load		m/s	0.40 / 0.40	0.40 / 0.40	0.40 / 0.40	0.40 / 0.40
	Gradeability, at rated load, 0/2 km/h		% / %	44 / 35	40 / 32	37 / 29	37 / 30
	Towing power, at rated load, 0/2 km/h		kN / kN	108 / 86	108 / 86	107 / 85	107 / 85
DRIVELINE	Engine power (min - max)	EU2 / EU3b	kW	147 - 201	147 - 201	147 - 201	147 - 201
	Engine torque (min - max)	EU2 / EU3b	Nm	700 - 1180	700 - 1180	700 - 1180	700 - 1180
	Transmission, gears forward + reverse			DANA 3 + 3 / ZF 3 + 3			
	Transmission type, function, shifting			Fully automatic transmission, torque convertor, reverse protection, powershift			
	Drive axle model			Kessler D81 (PL478) with differential			
	Driving brake system, type			Oil-cooled multiple wet disc brakes (WDB)			
	Parking brake system, type			Dry single disc / spring release			
	Steering system / steer axle type			Hydraulic power steering / HD axle with double-acting cylinder			
OTHERS	Load-sensing hydraulics / power-on-demand			Yes / yes	Yes / yes	Yes / yes	Yes / yes
	Hydraulic oil pressure		MPa	22	25	20	23
	Diesel / hydraulic tank volumes		Lit	131 / 152	131 / 152	168 / 192	168 / 192
	Batteries (voltage / capacity)		V - Ah	2 x 12 / 88	2 x 12 / 88	2 x 12 / 88	2 x 12 / 88
	Noise level inside cab (LM) DIN 45635	EU2 / EU3b	dB(A)	68 / 66	68 / 66	68 / 66	68 / 66
	Noise level inside cab (LpAZ) EN 12053		dB(A)	72	72	72	72
	Noise level outside (LWA) 2000/14/EC		dB(A)	109	109	109	109

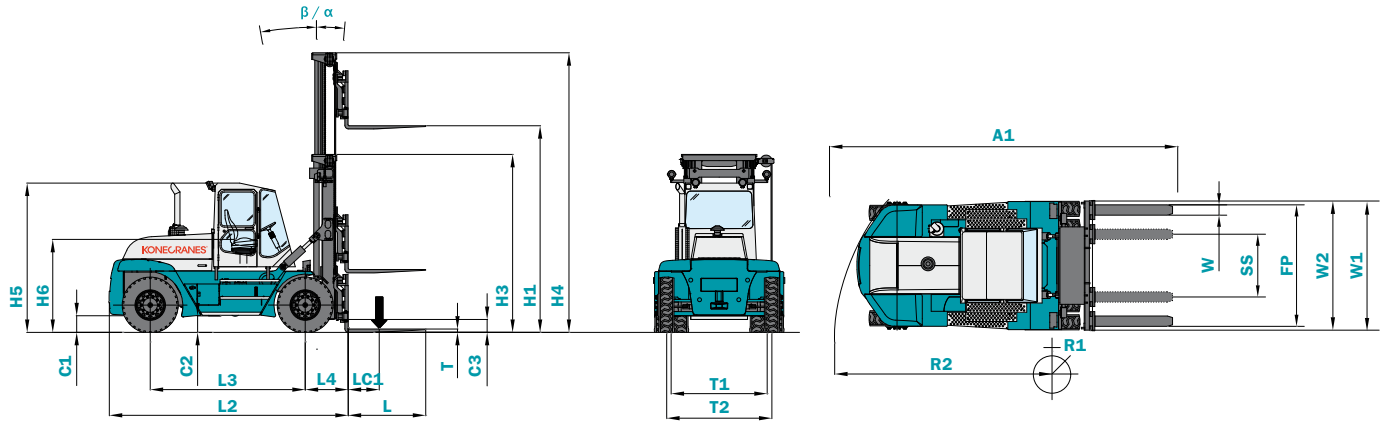
NOTE 1. All lifting capacities with duplex mast (4 m), carriage with sideshift & fork positioner and integral forks

NOTE 2. Other lifting capacities, wheelbases, lifting equipment combinations according to factory information and upon request

NOTE 3. For available driveline combinations, see driveline chart and latest factory information

NOTE 4. SMV 10-600 B and SMV 12-600 B are available in shorter wheelbase of 2800 mm, only with Volvo TAD-561/620/660-VE engine

Dimension measurement identifiers



SMV 12-1200 B	SMV 15-1200 B	SMV 16-600 B	SMV 16-900 B	SMV 16-1200 B	SMV 18-600 B	SMV 18-900 B
12000	15000	16000	16000	16000	18000	18000
1200	1200	600	900	1200	600	900
7000	7000	7000	7000	7000	7000	7000
925	925	905	915	925	905	915
3500	3750	3500	3500	3750	3750	3750
19900	21700	19500	21300	22400	20200	22100
10500 / 29800	10700 / 34200	10500 / 33400	10500 / 34800	10700 / 35800	10700 / 36000	10700 / 37400
9400 / 2200	11000 / 2600	9000 / 2000	10800 / 2500	11800 / 2700	9500 / 2200	11400 / 2600
Pneumatic	Pneumatic	Pneumatic	Pneumatic	Pneumatic	Pneumatic	Pneumatic
12.00 x 20" / PR20	12.00 x 20" / PR20	12.00 x 20" / PR20	12.00 x 20" / PR20	12.00 x 20" / PR20	12.00 x 20" / PR20	12.00 x 20" / PR20
8.00 x 20"	8.00 x 20"	8.00 x 20"	8.00 x 20"	8.00 x 20"	8.00 x 20"	8.00 x 20"
1.0 / 1.0	1.0 / 1.0	1.0 / 1.0	1.0 / 1.0	1.0 / 1.0	1.0 / 1.0	1.0 / 1.0
4X / 2	4X / 2	4X / 2	4X / 2	4X / 2	4X / 2	4X / 2
1859 / 2036	1859 / 2036	1859 / 2036	1859 / 2036	1859 / 2036	1859 / 2036	1859 / 2036
5 / 10	5 / 10	5 / 10	5 / 10	5 / 10	5 / 10	5 / 10
4000	4000	4000	4000	4000	4000	4000
3645 / 5600	3645 / 5600	3645 / 5600	3645 / 5600	3645 / 5600	3645 / 5600	3645 / 5600
2905 / 1815	2905 / 1815	2905 / 1815	2905 / 1815	2905 / 1815	2905 / 1815	2905 / 1815
5205	5455	5205	5205	5455	5455	5455
2550	2550	2550	2550	2550	2550	2550
200 x 100 x 2400	200 x 100 x 2400	200 x 80 x 1500	200 x 90 x 2400	200 x 100 x 2400	200 x 80 x 1500	200 x 90 x 2400
2550	2550	2550	2550	2550	2550	2550
600 / 2344	600 / 2344	600 / 2344	600 / 2344	600 / 2344	600 / 2344	600 / 2344
± 470 / 1207	± 470 / 1207	± 470 / 1207	± 470 / 1207	± 470 / 1207	± 470 / 1207	± 470 / 1207
250 / 335 / 197	250 / 335 / 197	250 / 335 / 197	250 / 335 / 197	250 / 335 / 197	250 / 335 / 197	250 / 335 / 197
8285	8565	7385	8285	8565	7665	7665
< 500 - 4775	< 500 - 5055	< 500 - 4775	< 500 - 4775	< 500 - 5055	< 500 - 5055	< 500 - 5055
30 / 30	30 / 30	30 / 30	30 / 30	30 / 30	30 / 30	30 / 30
0.40 / 0.35	0.40 / 0.35	0.40 / 0.35	0.40 / 0.35	0.40 / 0.35	0.33 / 0.29	0.33 / 0.29
0.40 / 0.40	0.40 / 0.40	0.40 / 0.40	0.40 / 0.40	0.40 / 0.40	0.40 / 0.40	0.40 / 0.40
34 / 27	29 / 23	30 / 24	30 / 24	28 / 22	28 / 22	27 / 21
107 / 85	107 / 85	107 / 85	107 / 85	107 / 85	107 / 85	107 / 85
147 - 201	147 - 201	147 - 201	147 - 201	147 - 201	147 - 201	147 - 201
700 - 1180	700 - 1180	700 - 1180	700 - 1180	700 - 1180	700 - 1180	700 - 1180
Yes / yes	Yes / yes	Yes / yes	Yes / yes	Yes / yes	Yes / yes	Yes / yes
18	22	23	23	23	19	19
206 / 227	243 / 272	206 / 227	206 / 227	243 / 272	243 / 272	243 / 272
2 x 12 / 88	2 x 12 / 88	2 x 12 / 88	2 x 12 / 88	2 x 12 / 88	2 x 12 / 88	2 x 12 / 88
68 / 66	68 / 66	68 / 66	68 / 66	68 / 66	68 / 66	68 / 66
72	72	72	72	72	72	72
109	109	109	109	109	109	109

This publication is for general informational purposes only. Konecranes reserves the right at any time, without notice, to alter or discontinue the products and/or specifications referenced herein. This publication creates no warranty on the part of Konecranes, express or implied, including but not limited to any implied warranty or merchantability or fitness for a particular purpose.

TECHNICAL DATA

Fork lift trucks 18 – 33 tons

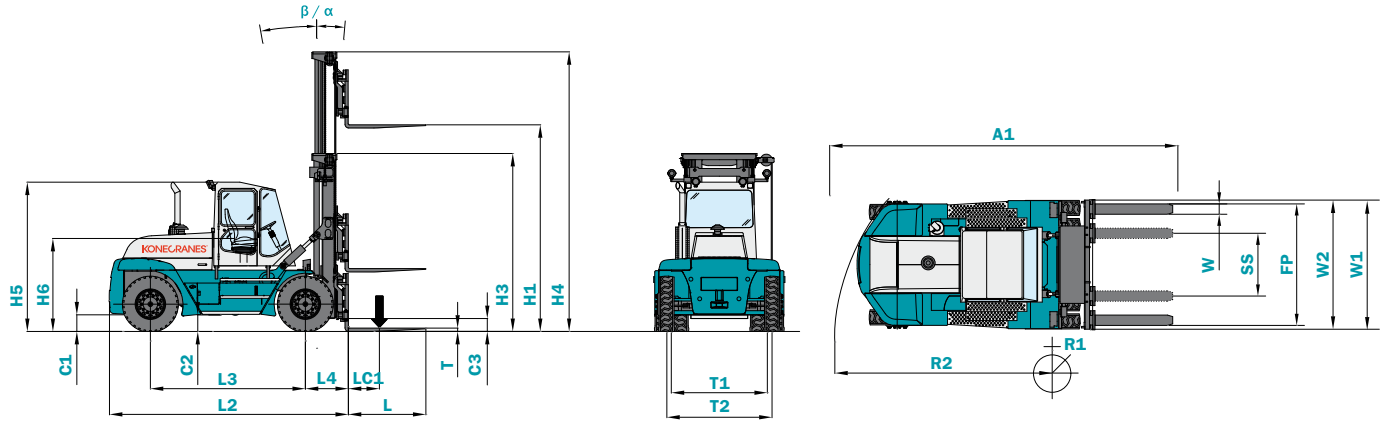
MODEL			SMV 18-1200 B	SMV 20-1200 B	SMV 22-1200 B	SMV 23.6-1200 B	
LIFTING DATA	Dimensions	Identifier	Units				
	Lifting capacity		kg	18000	20000	22000	23600
	Load center	LC1	mm	1200	1200	1200	1200
	Full lifting capacity up to lifting height		mm	9000	9000	9000	9000
	Lost load center	L4	mm	1090	1090	1090	1090
	Wheelbase	L3	mm	4000	4000	4250	4250
WEIGHT	Service weight		kg	30000	31500	32000	33200
	Axle pressure front, unloaded / at rated load		kg	16700 / 45000	16700 / 48100	16700 / 50500	16700 / 53000
	Axle pressure rear, unloaded / at rated load		kg	13300 / 3000	14800 / 3400	15300 / 3500	16500 / 3800
WHEELS	Tire type			Pneumatic	Pneumatic	Pneumatic	Pneumatic
	Tire dimension / ply rating, front & rear		Inch	14.00 x 24" / PR24	14.00 x 24" / PR24	14.00 x 24" / PR24	14.00 x 24" / PR24
	Rim dimensions, front & rear		Inch	10.00 x 24"	10.00 x 24"	10.00 x 24"	10.00 x 24"
	Tire pressure, front / rear		MPa	0.9 / 0.9	0.9 / 0.9	0.9 / 0.9	0.9 / 0.9
	Number of wheels, front / rear (X = driven)			4X / 2	4X / 2	4X / 2	4X / 2
	Track width, front / rear	T1 / T2	mm	2199 / 2336	2199 / 2336	2199 / 2336	2199 / 2336
DIMENSIONS	Mast tilt, backward / forward	β / α	deg	5 / 10	5 / 10	5 / 10	5 / 10
	Lifting height	H1	mm	4000	4000	4000	4000
	Mast height, retracted / extended	H3 - H4	mm	3810 / 5755	3810 / 5755	3810 / 5755	3810 / 5755
	Truck height over cabin / seat height	H5 - H6	mm	3280 / 2180	3280 / 2180	3280 / 2180	3280 / 2180
	Overall length (to back of fork)	L2	mm	5995	5995	6245	6245
	Drive axle width	W1	mm	3020	3020	3020	3020
	Fork dimensions (width x thickness x length)	W x T x L	mm	200 x 110 x 2400	200 x 110 x 2400	250 x 110 x 2400	250 x 110 x 2400
	Fork carriage type			Hydraulic-powered sideshift & fork positioner			
	Fork carriage width	W2	mm	3000	3000	3000	3000
	Fork positioning (min - max / outside)	FP	mm	950 / 2550 (opt. 650 / 2810)		1000 / 2600 (opt. 750 / 2860)	
	Fork sideshift (max / at fork position)	SS	mm	± 400 / 1550 (opt. ± 550 / 1510)		± 400 / 1550 (opt. ± 550 / 1510)	
Ground clearance (mast / middle / steer axle)	C1 / C2 / C3	mm	300 / 330 / 325	300 / 330 / 325	300 / 330 / 325	300 / 330 / 325	
Aisle width	A1	mm	8970	8970	9240	9240	
Turning radius (inner - outer)	R1 - R2	mm	< 750 - 5280	< 750 - 5280	< 750 - 5550	< 750 - 5550	
PERFORMANCE	Drive speed forward, unloaded / at rated load		km/h	29 / 28	29 / 27	29 / 27	29 / 27
	Drive speed reverse, unloaded / at rated load		km/h	29 / 28	29 / 27	29 / 27	29 / 27
	Lifting speed, unloaded / at rated load		m/s	0.30 / 0.25	0.30 / 0.25	0.30 / 0.25	0.30 / 0.25
	Lowering speed, unloaded / at rated load		m/s	0.40 / 0.40	0.40 / 0.40	0.40 / 0.40	0.40 / 0.40
	Gradeability, at rated load, 0/2 km/h		% / %	43 / 33	39 / 30	37 / 28	35 / 26
	Towing power, at rated load, 0/2 km/h		kN / kN	196 / 147	196 / 147	196 / 147	196 / 147
DRIVELINE	Engine power (min - max)	EU2 / EU3b	kW	180 - 201	180 - 201	180 - 201	180 - 201
	Engine torque (min - max)	EU2 / EU3b	Nm	990 - 1180	990 - 1180	990 - 1180	990 - 1180
	Transmission, gears forward + reverse			DANA 3 + 3 / ZF 4 + 3			
	Transmission type, function, shifting			Fully automatic transmission, torque converter, reverse protection, powershift			
	Drive axle model			Kessler D91 (PL488) with differential			
	Driving brake system, type			Oil-cooled multiple wet disc brakes (WDB)			
	Parking brake system, type			Dry single disc / spring release			
Steering system / steer axle type			Hydraulic power steering / HD axle with double-acting cylinder				
OTHERS	Load-sensing hydraulics / power-on-demand			Yes / yes	Yes / yes	Yes / yes	Yes / yes
	Hydraulic oil pressure		MPa	19	20	22	22
	Diesel / hydraulic tank volumes		Lit	280 / 312	280 / 312	336 / 368	336 / 368
	Batteries (voltage / capacity)		V - Ah	2 x 12 / 140	2 x 12 / 140	2 x 12 / 140	2 x 12 / 140
	Noise level inside cab (LM) DIN 45635	EU2 / EU3b	dB(A)	70 / 68	70 / 68	70 / 68	70 / 68
	Noise level inside cab (LpAZ) EN 12053		dB(A)	75	75	75	75
Noise level outside (LWA) 2000/14/EC		dB(A)	110	110	110	110	

NOTE 1. All lifting capacities with duplex mast (4 m), carriage with sideshift & fork positioner and integral forks

NOTE 2. Other lifting capacities, wheelbases, lifting equipment combinations according to factory information and upon request

NOTE 3. For available driveline combinations, see driveline chart and latest factory information

Dimension measurement identifiers



SMV 25-1200 B	SMV 28-1200 B	SMV 32-1200 B	SMV 33-1200 B	SMV 28-1200 B RoRo	SMV 32-1200 B RoRo
25000	28000	32000	33000	28000	32000
1200	1200	1200	1200	1200	1200
9000	9000	9000	9000	3100	3100
1090	1195	1195	1195	1430	1430
4250	4500	4750	4750	4500	4750
34100	39600	41300	42400	41900	44500
16700 / 55100	20300 / 63100	20500 / 68600	20800 / 70400	20700 / 65100	21400 / 71100
17400 / 4000	19300 / 4500	20800 / 4700	21600 / 5000	21200 / 4800	23100 / 5400
Pneumatic	Pneumatic	Pneumatic	Pneumatic	Pneumatic	Pneumatic
14.00 x 24" / PR24	16.00 x 25" / PR28	16.00 x 25" / PR28	16.00 x 25" / PR32	16.00 x 25" / PR28	16.00 x 25" / PR32
10.00 x 24"	11.25 x 25"	11.25 x 25"	11.25 x 25"	11.25 x 25"	11.25 x 25"
0.9 / 0.9	0.9 / 0.9	0.9 / 0.9	0.9 / 0.9	0.9 / 0.9	0.9 / 0.9
4X / 2	4X / 2	4X / 2	4X / 2	4X / 2	4X / 2
2199 / 2336	2467 / 2657	2467 / 2657	2467 / 2657	2467 / 2657	2467 / 2657
5 / 10	5 / 10	5 / 10	5 / 10	5 / 10	5 / 10
4000	4000	4000	4000	3100	3100
3810 / 5755	4010 / 5955	4010 / 5955	4010 / 5955	2925 / 4565	2925 / 4565
3280 / 2180	3400 / 2300	3400 / 2300	3400 / 2300	2925 / 1860	2925 / 1860
6245	6755	7005	7005	6970	7240
3020	3440	3440	3440	3440	3440
250 x 110 x 2400	300 x 110 x 2400	300 x 110 x 2400	300 x 110 x 2400	300 x 110 x 2400	300 x 110 x 2400
	Hydraulic-powered sideshift & fork positioner				
3000	3400	3400	3400	3400	3400
	1550 / 2750 (opt. 900 / 2850)			1550 / 2750	
	± 300 / 1850 (opt. ± 500 / 1550)			± 300 / 1850	
300 / 330 / 325	300 / 360 / 390	300 / 360 / 390	300 / 360 / 390	250 / 340 / 390	250 / 340 / 390
9240	10150	10435	10435	10390	10670
< 750 - 5550	830 - 6360	970 - 6640	970 - 6640	830 - 6360	970 - 6640
28 / 27	24 / 23	24 / 22	23 / 21	24 / 22	23 / 21
28 / 27	24 / 23	24 / 22	23 / 21	24 / 22	28 / 27
0.30 / 0.25	0.32 / 0.27	0.32 / 0.27	0.32 / 0.27	0.32 / 0.27	0.32 / 0.27
0.40 / 0.40	0.40 / 0.40	0.40 / 0.40	0.40 / 0.40	0.40 / 0.40	0.40 / 0.40
34 / 24	33 / 22	29 / 19	27 / 17	30 / 20	27 / 17
196 / 147	225 / 156	225 / 156	225 / 156	225 / 156	225 / 156
180 - 201	180 - 201	180 - 201	180 - 201	180 - 201	180 - 201
990 - 1180	990 - 1180	990 - 1180	990 - 1180	990 - 1180	990 - 1180
	DANA 3 + 3 / ZF 4 + 3				
	Fully automatic transmission, torque convertor, reverse protection, powershift				
	Kessler D91 (PL408) with differential				
	Oil-cooled multiple wet disc brakes (WDB)				
	Dry single disc / spring release				
	Hydraulic power steering / HD axle with double-acting cylinder				
Yes / yes	Yes / yes	Yes / yes	Yes / yes	Yes / yes	Yes / yes
24	20	22	22	20	22
336 / 368	316 / 355	371 / 406	371 / 406	316 / 355	371 / 406
2 x 12 / 140	2 x 12 / 140	2 x 12 / 140	2 x 12 / 140	2 x 12 / 140	2 x 12 / 140
70 / 68	70 / 68	70 / 68	70 / 68	70 / 68	70 / 68
75	75	75	75	75	75
110	110	110	110	110	110

TECHNICAL DATA

Fork lift trucks 37 – 65 tons

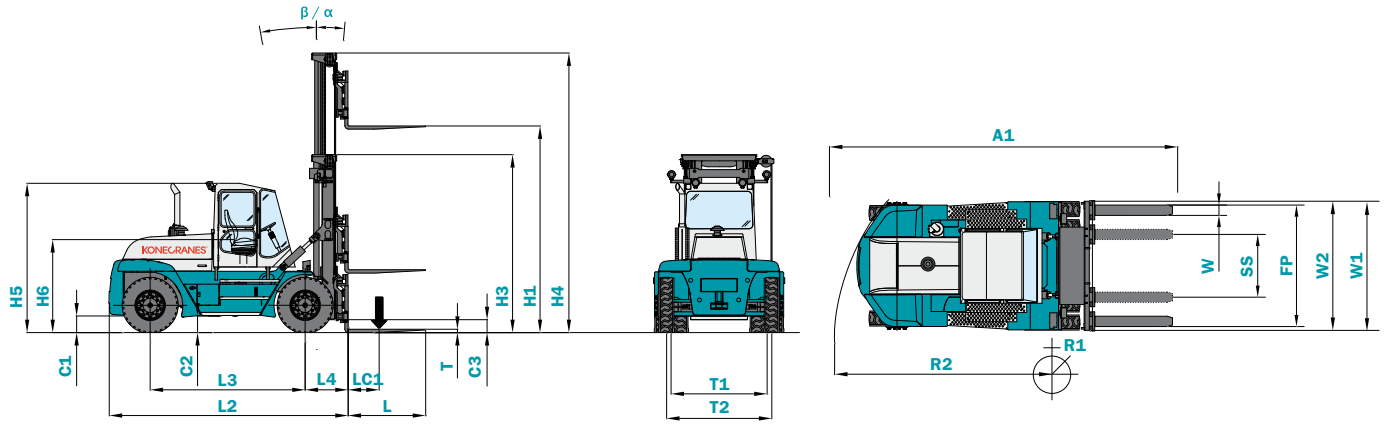
MODEL			SMV 37-1200 B	SMV 42-1200 B	SMV 45-1200 B	
LIFTING DATA	Dimensions	Identifier	Units			
	Lifting capacity		kg	37000	42000	45000
	Load center	LC1	mm	1200	1200	1200
	Full lifting capacity up to lifting height		mm	9000	9000	9000
	Lost load center	L4	mm	1240	1240	1240
	Wheelbase	L3	mm	5000	5500	5500
WEIGHT	Service weight		kg	49600	50100	51900
	Axle pressure front, unloaded / at rated load		kg	25700 / 80800	25600 / 86300	25600 / 90600
	Axle pressure rear, unloaded / at rated load		kg	23900 / 5800	24500 / 5800	26300 / 6300
WHEELS	Tire type			Pneumatic	Pneumatic	Pneumatic
	Tire dimension / ply rating, front & rear		Inch	18.00 x 25" / PR40	18.00 x 25" / PR40	18.00 x 25" / PR40
	Rim dimensions, front & rear		Inch	13.00 x 25"	13.00 x 25"	13.00 x 25"
	Tire pressure, front / rear		MPa	1.0 / 1.0	1.0 / 1.0	1.0 / 1.0
	Number of wheels, front / rear (X = driven)			4X / 2	4X / 2	4X / 2
	Track width, front / rear	T1 / T2	mm	3030 / 2612	3030 / 2612	3030 / 2612
DIMENSIONS	Mast tilt, backward / forward	β / α	deg	5 / 10	5 / 10	5 / 10
	Lifting height	H1	mm	4000	4000	4000
	Mast height, retracted / extended	H3 - H4	mm	4550 / 6485	4550 / 6485	4550 / 6485
	Truck height over cabin / seat height	H5 - H6	mm	3660 / 2550	3660 / 2550	3660 / 2550
	Overall length (to back of fork)	L2	mm	7300	7800	7800
	Drive axle width	W1	mm	4160	4160	4160
	Fork dimensions (width x thickness x length)	W x T x L	mm	300 x 135 x 2400	300 x 135 x 2400	300 x 135 x 2400
	Fork carriage type			Sideshift & fork positioner		
	Fork carriage width	W2	mm	3400	3400	3400
	Fork positioning (min - max / outside)	FP	mm	1950 / 2750 (opt. 850 / 3150)		
	Fork sideshift (max / at fork position)	SS	mm	± 200 / 2050 (opt. ± 550 / 1700)		
	Ground clearance (mast / middle / steer axle)	C1 / C2 / C3	mm	300 / 440 / 520	300 / 440 / 520	300 / 440 / 270
Aisle width	A1	mm	10700	11300	11300	
Turning radius (inner - outer)	R1 - R2	mm	750 - 6900	1100 - 7500	1100 - 7500	
PERFORMANCE	Drive speed forward, unloaded / at rated load		km/h	24 / 23	24 / 23	24 / 23
	Drive speed reverse, unloaded / at rated load		km/h	24 / 23	24 / 23	24 / 23
	Lifting speed, unloaded / at rated load		m/s	0.26 / 0.21	0.26 / 0.21	0.26 / 0.21
	Lowering speed, unloaded / at rated load		m/s	0.40 / 0.40	0.40 / 0.40	0.40 / 0.40
	Gradeability, at rated load, 0/2 km/h		% / %	37 / 28	34 / 26	34 / 26
	Towing power, at rated load, 0/2 km/h		kN / kN	309 / 248	309 / 248	309 / 248
DRIVELINE	Engine power (min - max)	EU2 / EU3b	kW	256 - 294	256 - 294	256 - 294
	Engine torque (min - max)	EU2 / EU3b	Nm	1640 - 2172	1640 - 2172	1640 - 2172
	Transmission, gears forward + reverse			DANA 4 + 4 / ZF 4 + 3		
	Transmission type, function, shifting			Fully automatic transmission, torque convertor, reverse protection, powershift		
	Drive axle model			Kessler D102		
	Driving brake system, type			Oil-cooled multiple wet disc brakes (WDB)		
	Parking brake system, type			Dry single disc / spring release		
Steering system / steer axle type			Hydraulic power steering / HD axle with double-acting cylinder			
OTHERS	Load-sensing hydraulics / power-on-demand			Yes / yes	Yes / yes	Yes / yes
	Hydraulic oil pressure		MPa	20	21	22
	Diesel / hydraulic tank volumes		Lit	410 / 480	550 / 630	550 / 630
	Batteries (voltage / capacity)		V - Ah	2 x 12 / 140	2 x 12 / 140	2 x 12 / 140
	Noise level inside cab (LM) DIN 45635	EU2 / EU3b	dB(A)	73 / 70	73 / 70	73 / 70
	Noise level inside cab (LpAZ) EN 12053		dB(A)	76	76	76
Noise level outside (LWA) 2000/14/EC		dB(A)	111	111	111	

NOTE 1. All lifting capacities with duplex mast (4 m), carriage with sideshift & fork positioner and integral forks

NOTE 2. Other lifting capacities, wheelbases, lifting equipment combinations according to factory information and upon request

NOTE 3. For available driveline combinations, see driveline chart and latest factory information

Dimension measurement identifiers



SMV 50-1200 B	SMV 52-1200 B	SMV 60-1500 B	SMV 65-1200 B
50000	52000	60000	65000
1200	1200	1500	1200
6000	6000	6000	6000
1340	1430	1620	1620
6000	6000	6000	6000
58100	61700	89600	89600
30500 / 101700	32000 / 106800	48300 / 139600	48300 / 139600
27600 / 6400	29700 / 6900	41300 / 10000	41300 / 10000
Pneumatic	Pneumatic	Pneumatic	Pneumatic
18.00 x 25" / PR40	18.00 x 33" / PR36	21.00 x 35" / PR40 + 18.00 x 33" / PR36	
13.00 x 25"	13.00 x 33"	13.00 x 33" + 11.25 x 25"	
1.0 / 1.0	1.0 / 1.0	1.0 / 1.0	1.0 / 1.0
4X / 2	4X / 2	4X / 2	4X / 2
3030 / 2612	3030 / 2911	3225 / 2911	3225 / 2911
5 / 10	5 / 10	5 / 10	5 / 10
4000	4000	4000	4000
5050 / 6975	5050 / 6975	5750 / 7700	5750 / 7700
3660 / 2550	3840 / 2725	4025 / 2900	4025 / 2900
8400	8550	8750	8750
4160	4160	4600	4600
300 x 150 x 2400	300 x 150 x 2400	300 x 200 x 2400	300 x 200 x 2400
Sideshift & fork positioner		Sideshift & fork positioner	
3400	3400	4400	4400
1950 / 2750 (opt. 850 / 3150)		1950 / 2750 (opt. 850 / 3150)	
± 200 / 2050 (opt. ± 550 / 1700)		± 200 / 2050 (opt. ± 550 / 1700)	
300 / 440 / 270	300 / 600 / 400	350 / 750 / 400	350 / 750 / 400
12000	12100	12300	12300
1200 - 8050	1200 - 8050	950 - 8100	950 - 8100
24 / 22	26 / 23	29 / 22	29 / 22
24 / 22	26 / 23	29 / 22	29 / 22
0.21 / 0.16	0.21 / 0.16	0.21 / 0.16	0.21 / 0.16
0.40 / 0.40	0.40 / 0.40	0.22 / 0.26	0.22 / 0.26
28 / 23	35 / 23	23 / 17	23 / 17
313 / 253	260 / 214	360 / 275	360 / 275
256 - 294	256 - 294	256 - 294	256 - 294
1640 - 2172	1640 - 2172	1640 - 2172	1640 - 2172
	Kessler D106	DANA 4 + 4 / ZF 4 + 3	
		Fully automatic transmission, torque converter, reverse protection, powershift	
		Kessler D111	
		Oil-cooled multiple wet disc brakes (WDB)	
		Dry single disc / spring release	
		Hydraulic power steering / HD axle with double-acting cylinder	
Yes / yes	Yes / yes	Yes / yes	Yes / yes
19	22	24	24
550 / 630	550 / 630	550 / 650	550 / 650
2 x 12 / 140	2 x 12 / 140	2 x 12 / 140	2 x 12 / 140
73 / 70	73 / 70	73 / 70	73 / 70
76	76	76	76
111	111	112	112